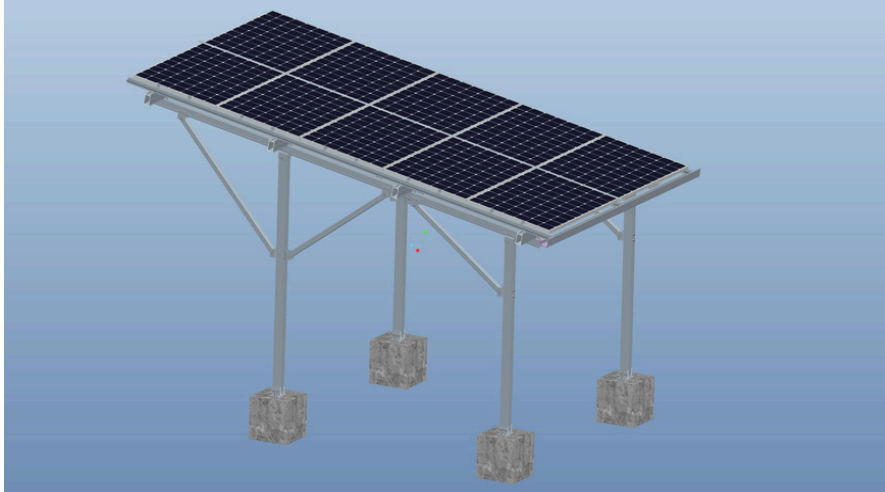


Installation manual



1. Preparation

1.1 Safty

Please use the following tools and pay attention to safety during construction



Safety Clothing



Safety Shoes



Helmet



Safety Glas



Goggles

1.2 Tools



Allen wrench
M8-M12



Wrench
M8-M12



Twist Wrench
M8-M12



Electric Rotor



Awning Turned



Electric Screw



Tape Measure



Rope



Wood Hammer



Sleeve

Outer hexagonal bolt	Type of sleeve:	Inner hexagonal bolt	Type of sleeve:
ST6.3	10mm sleeve	M8	6mm hexagon wrench
M10	16(17)mm sleeve		
M12	18(19)mm sleeve		

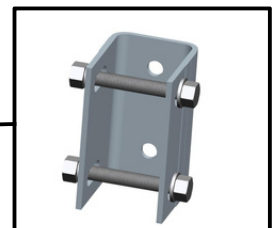
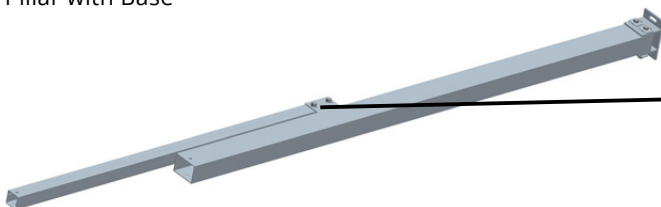
If there is another type of bolt,pls use other sleeves

1.3 Solar Accessories

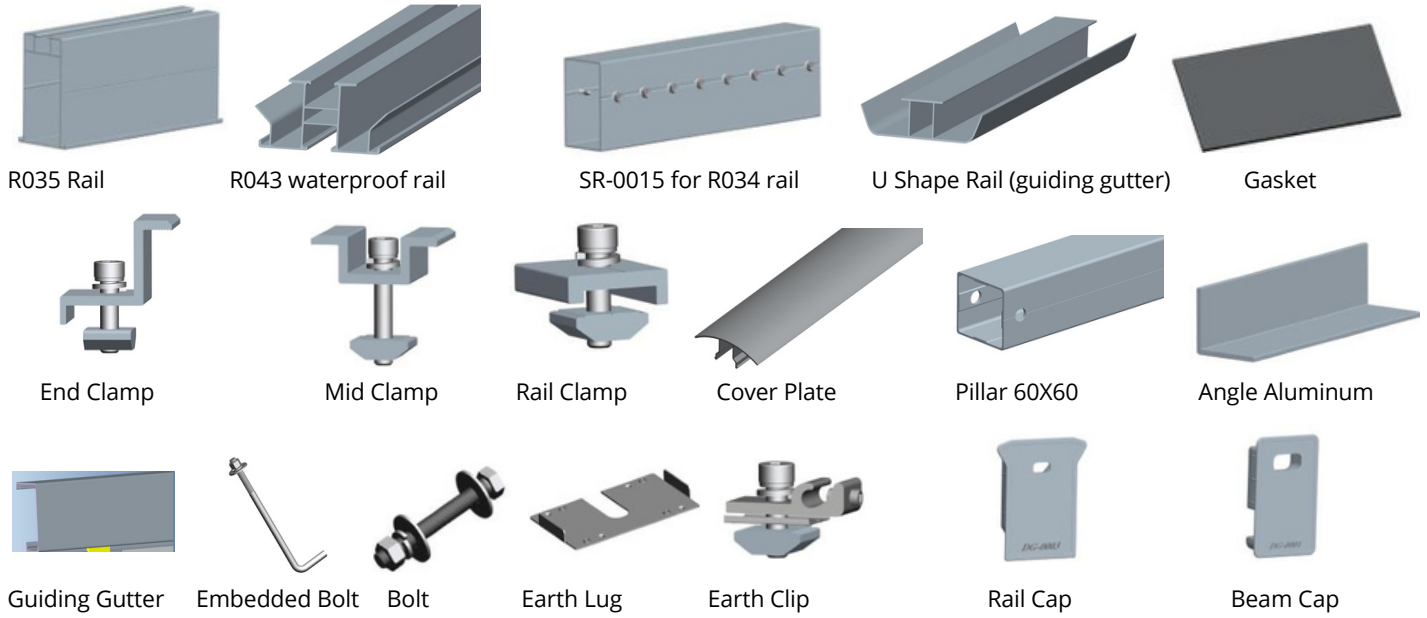
Preassemble Beam



Preassemble Pillar with Base

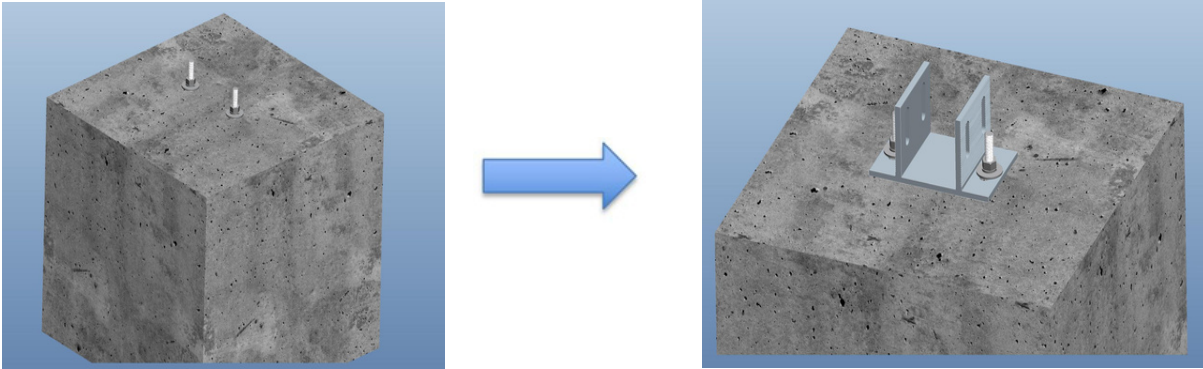


Other Accessories



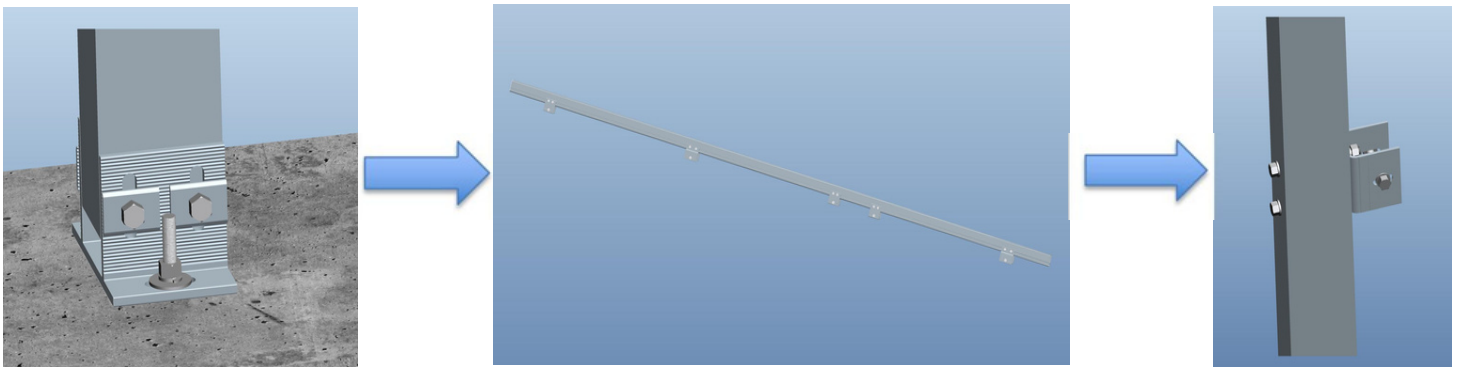
2. Installation

2.1: Prepare Base on the concrete block ,use

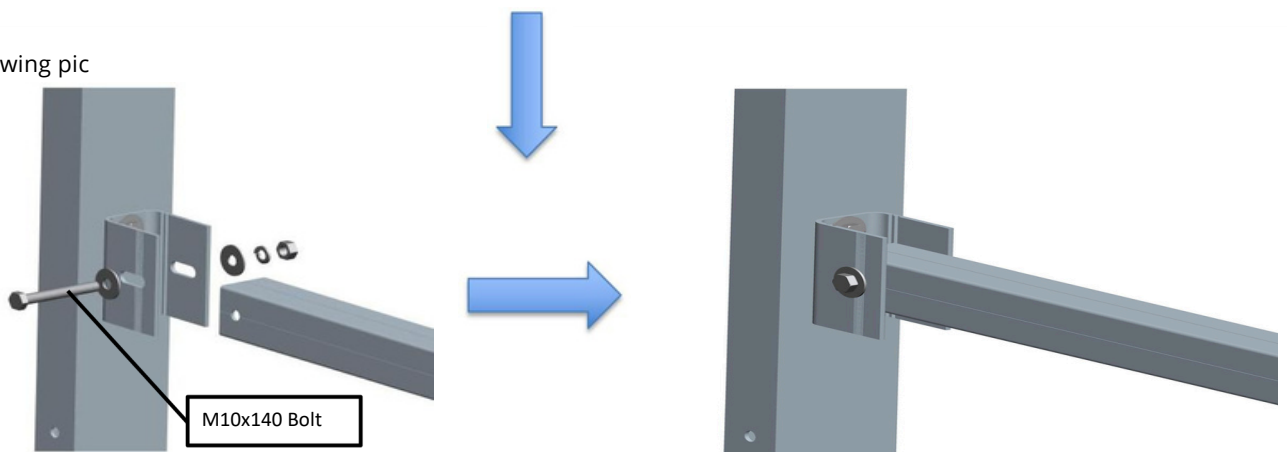


2.2: Install Pre-assembled Pillar to the base and insall the Pre-assembled Pillar Beam

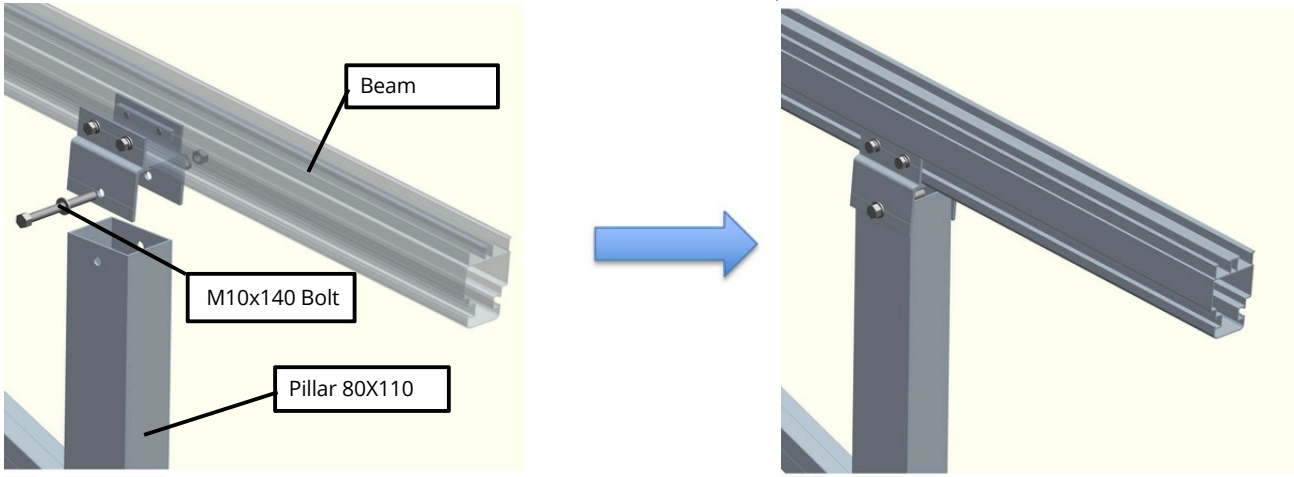
Refer the drawing to fix the corresponding pillar on the base.
Fix the reinforcing pillar to the splice of the pillar and splice of the beam



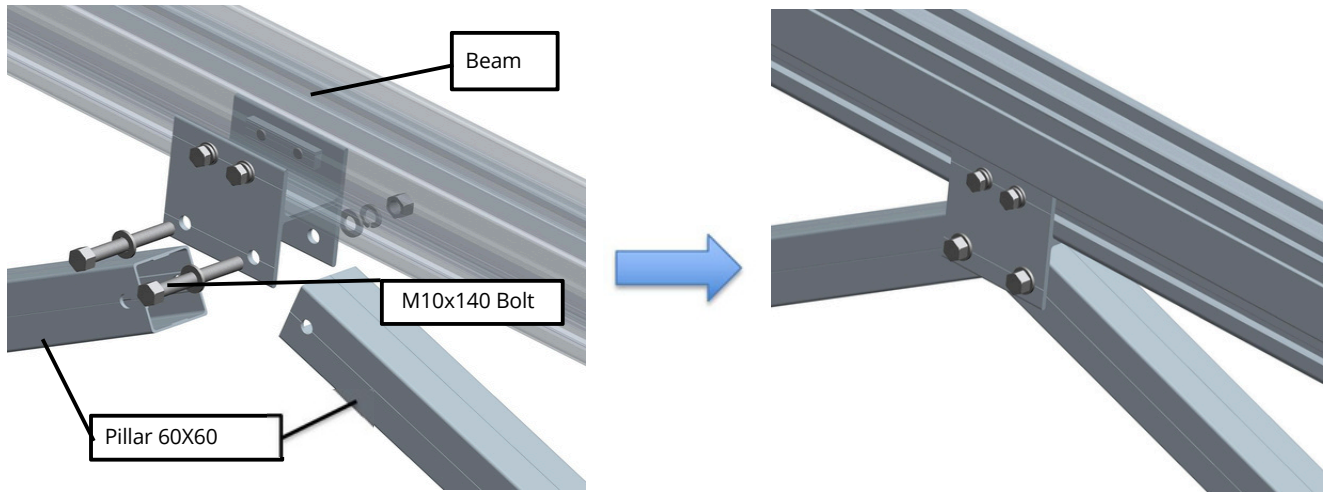
Refer to following pic



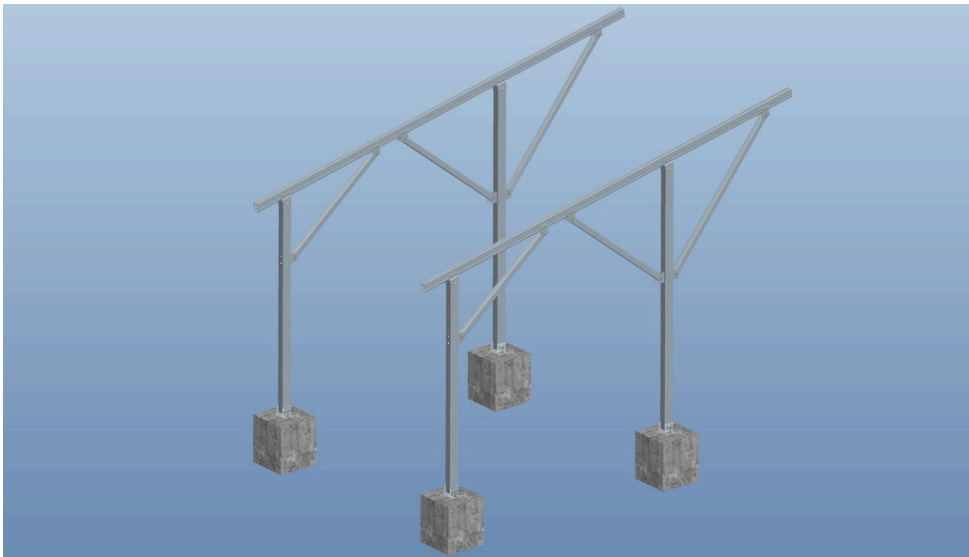
2.3: Use M10x140 Bolt to connect Preassemble Beam and Preassemble pillar.



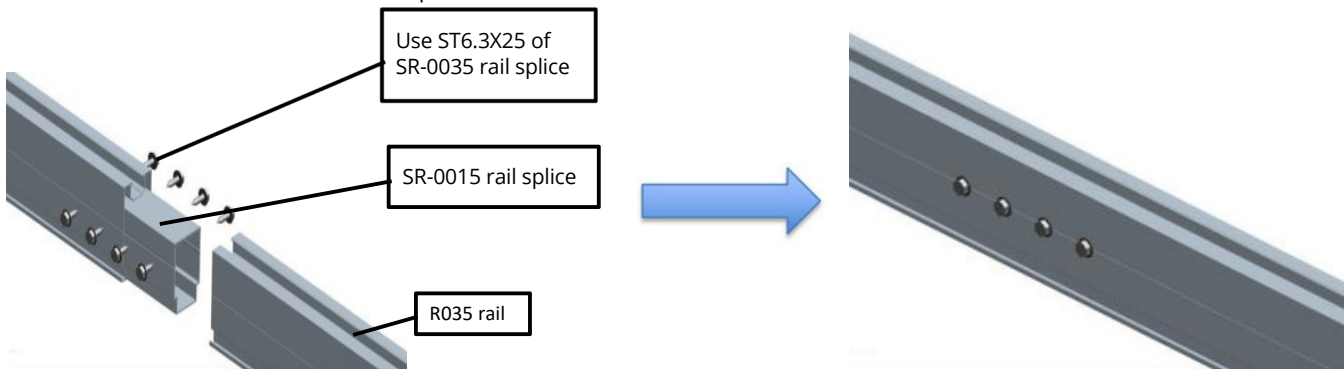
2.4: Use M10x140 Bolt to connect Preassemble Beam and Preassemble pillar



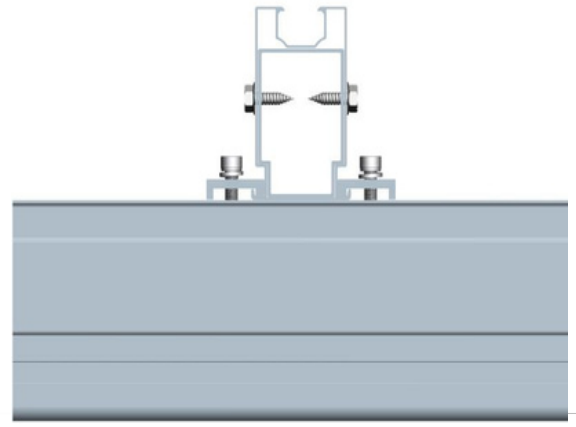
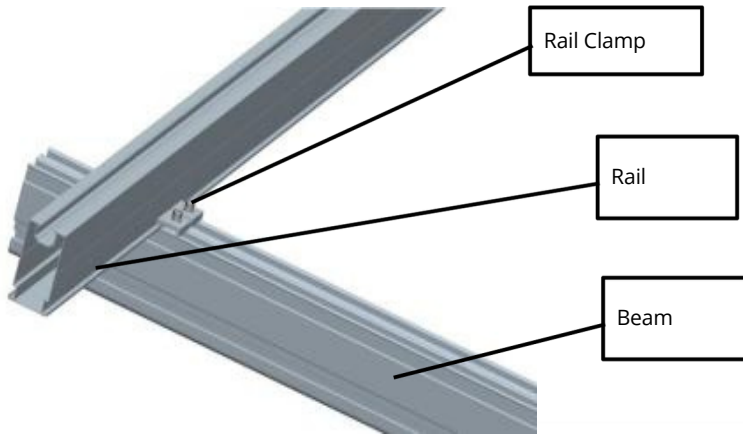
Completed



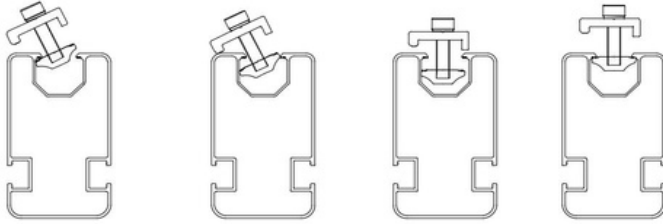
2.5 Install R034 Rail and SR-0035 Rail Splice



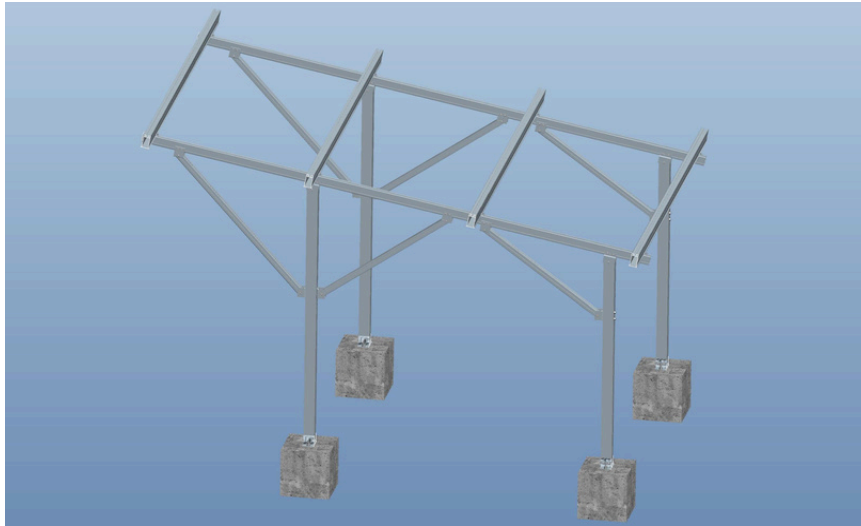
2.6: Use rail clamp to fix R034 rail to Beam



Tips: pls install the rail clamp as following steps

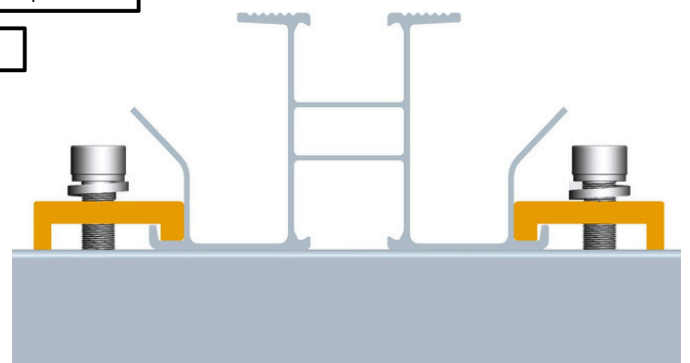
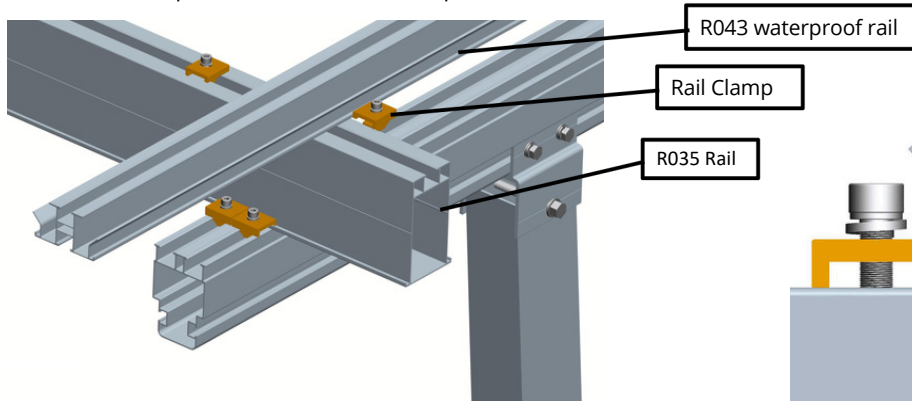


Completed



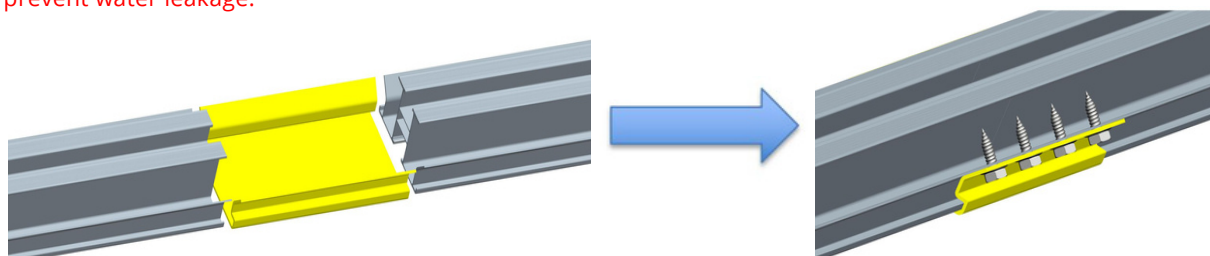
2.7 Install R043 waterproof rail

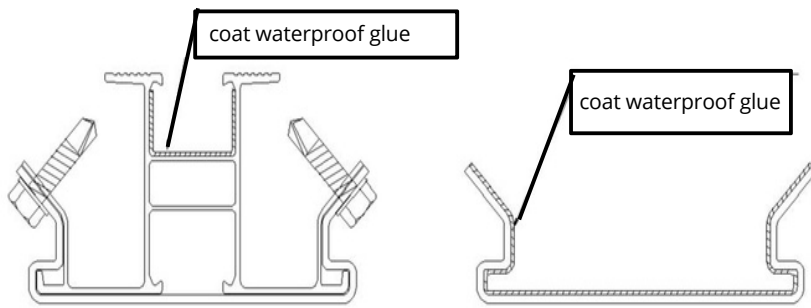
①. Use rail clamp to connect R043 waterproof rail to R043 rail



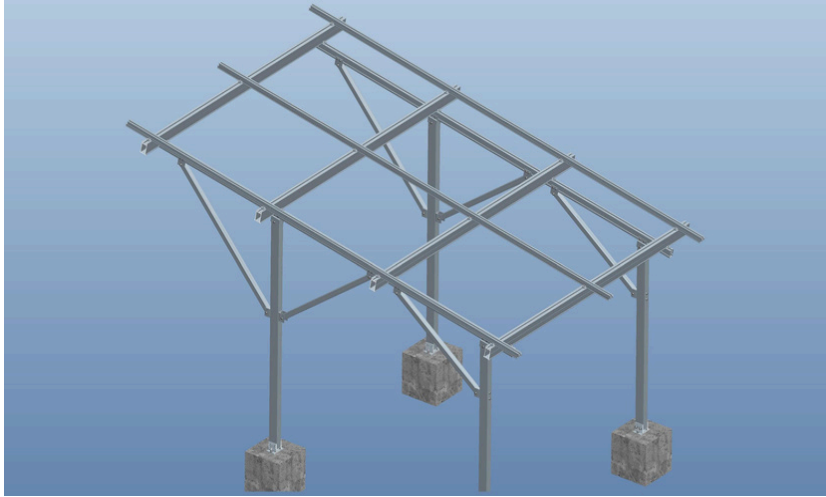
Use SR-0041 waterproof railing splice to connect waterproof railing

Tips: The interior of the waterproof rail splice and the connection of the waterproof rail should be coated with waterproof glue to prevent water leakage.



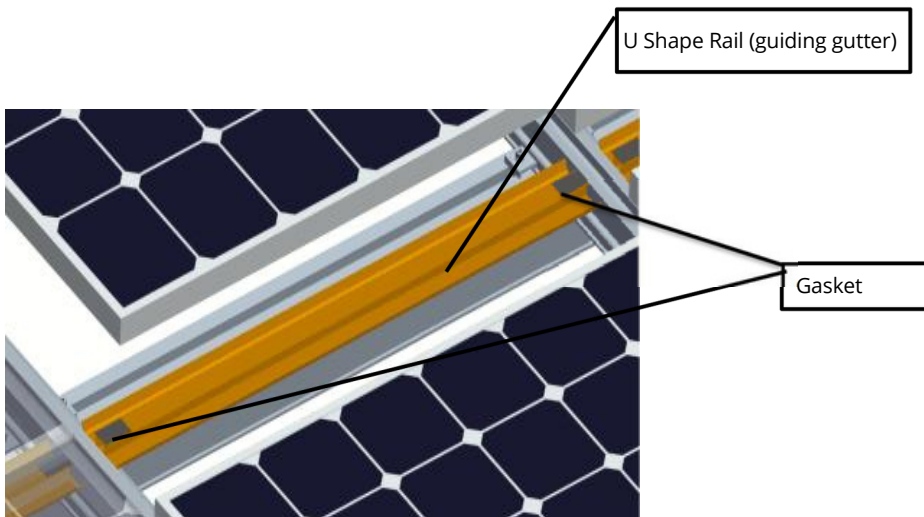
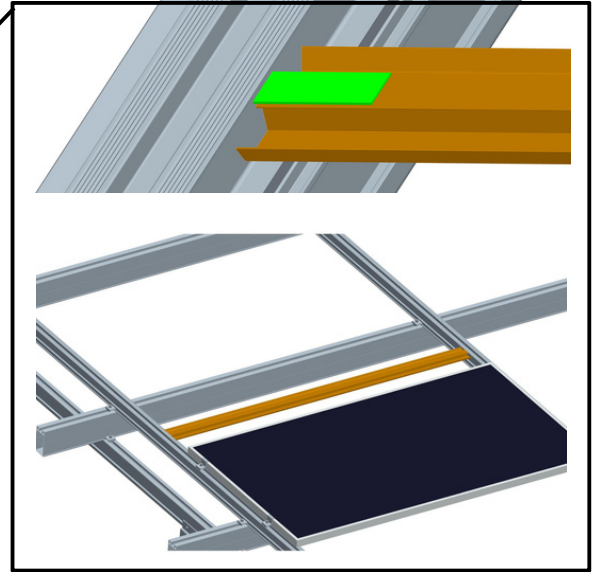
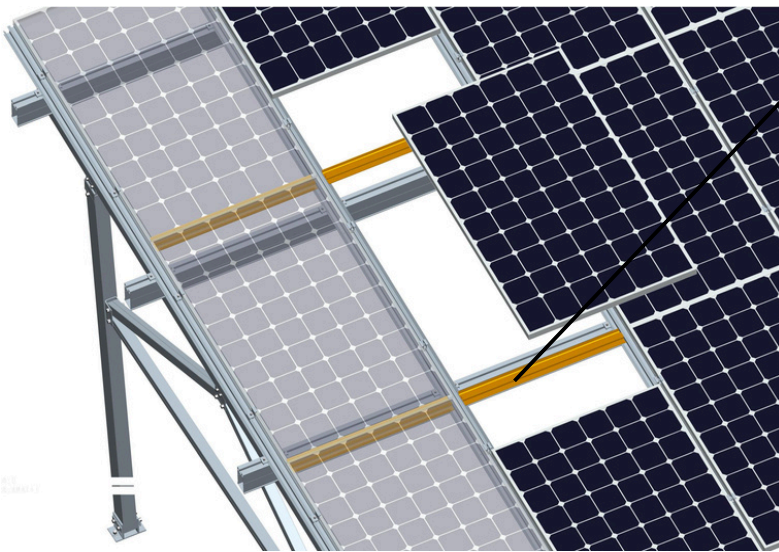


Completed

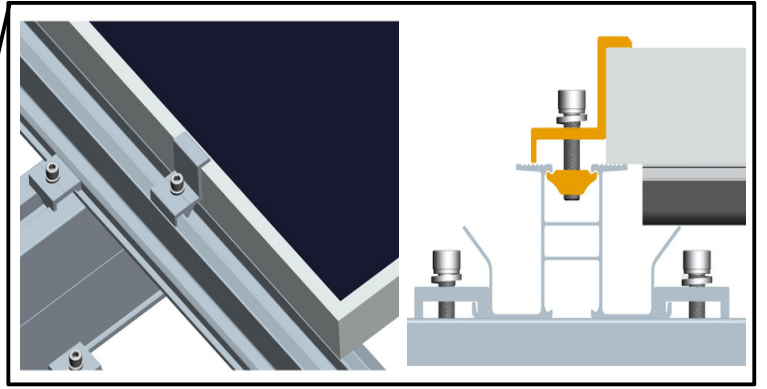
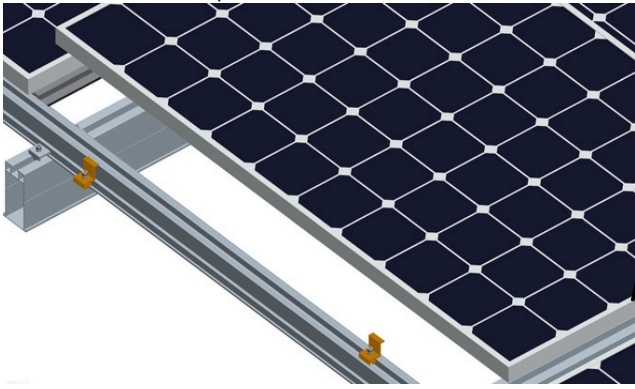


2.8 : Install solar panel,U Shape Rail (guiding gutter and gasket)

①.Put U Shape Rail (guiding gutter) between rail and panel,and fixed by panel.

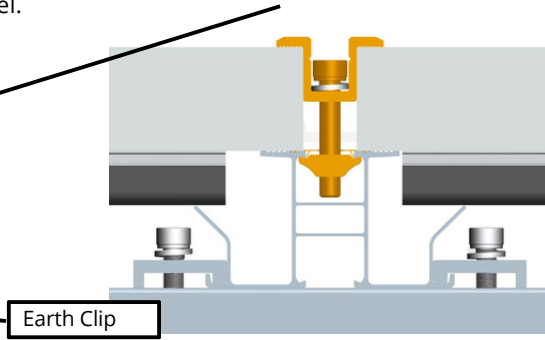
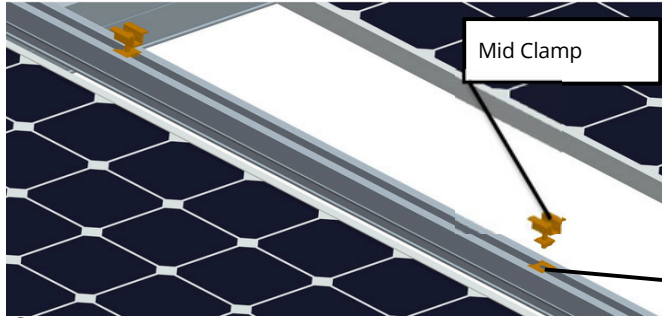


2.9 : Install End clamp

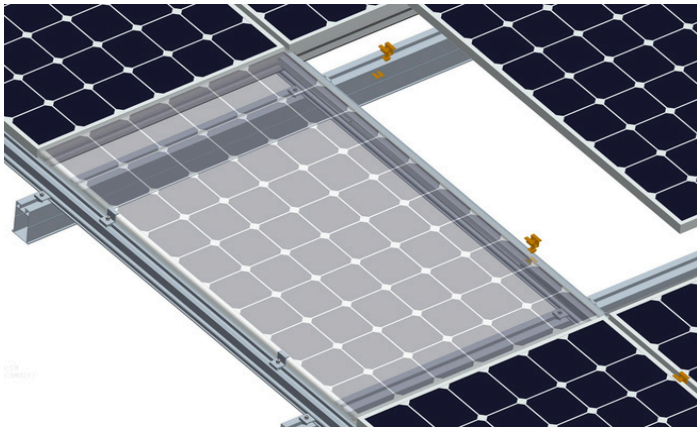


2.10 : Install Mid clamp,Earth Clip

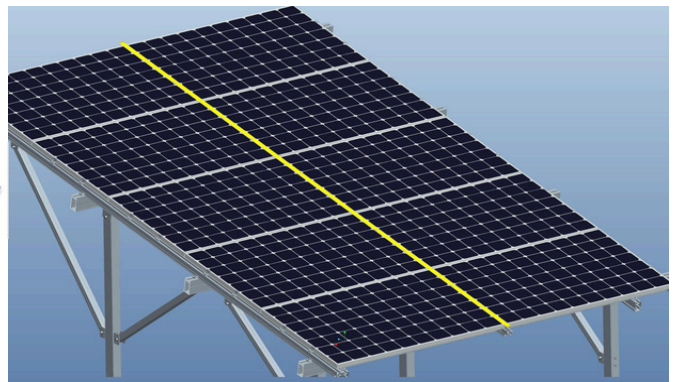
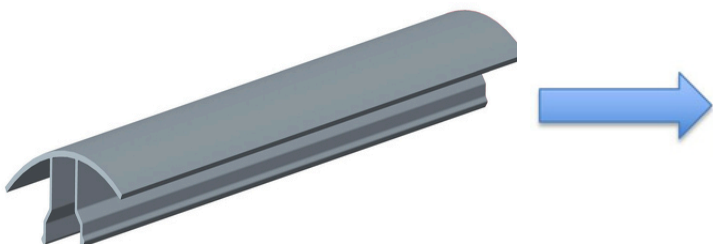
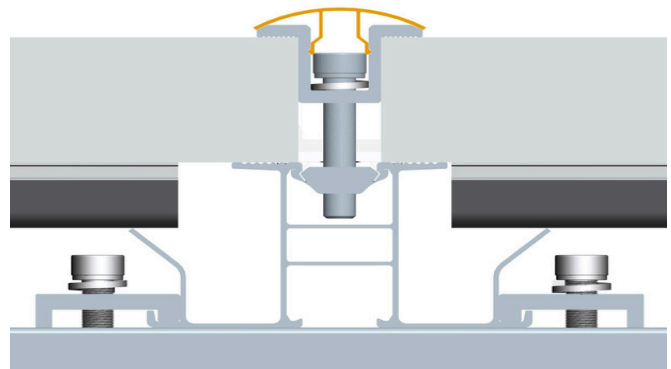
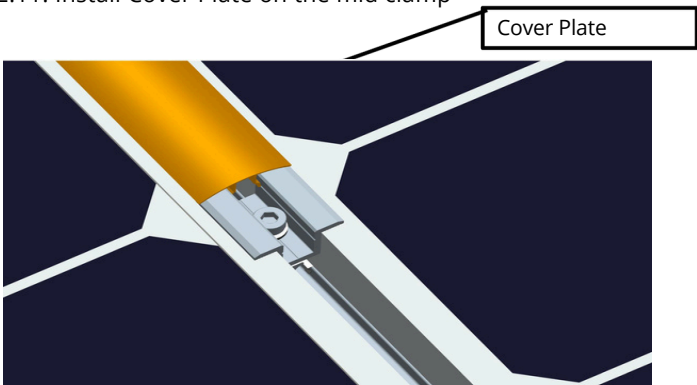
①:Put earth lug under mid clamp,and then fix the solar panel.



②: Earth lug will break the oxidation film of rail and panel to conduct electricity



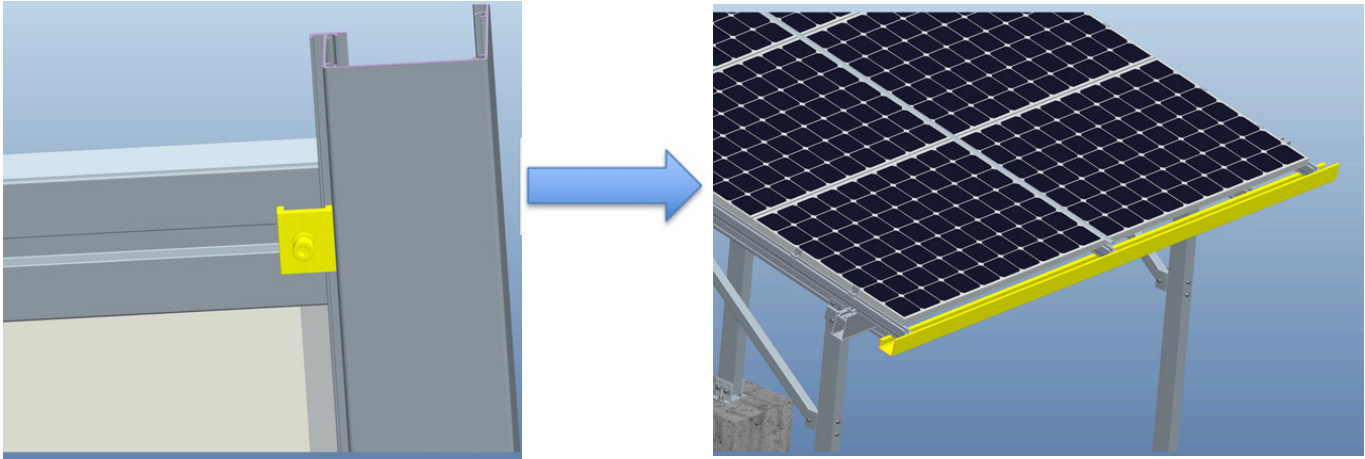
2.11: Install Cover Plate on the mid clamp



2.12: Install Guiding Gutter

Place the Guiding Gutter on the lowest of the panel (one end of the gutter aligned with the horizontal rail).

Use the rail to fix the Guiding Gutter under the waterproof guide rail, to guarantee the water Guiding Gutter can take in the water on the panel.

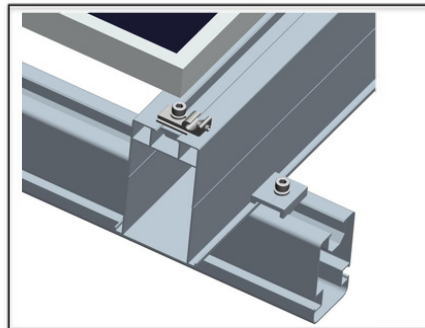
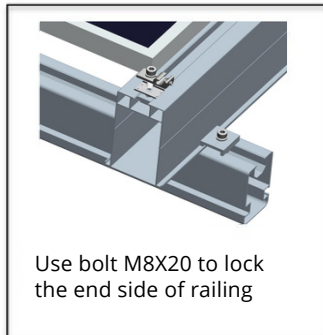


2.13 Install Earth Clip ,Rail Cap , Beam Cape

Solar Accessories

How to **install**

Complete



Completed :

